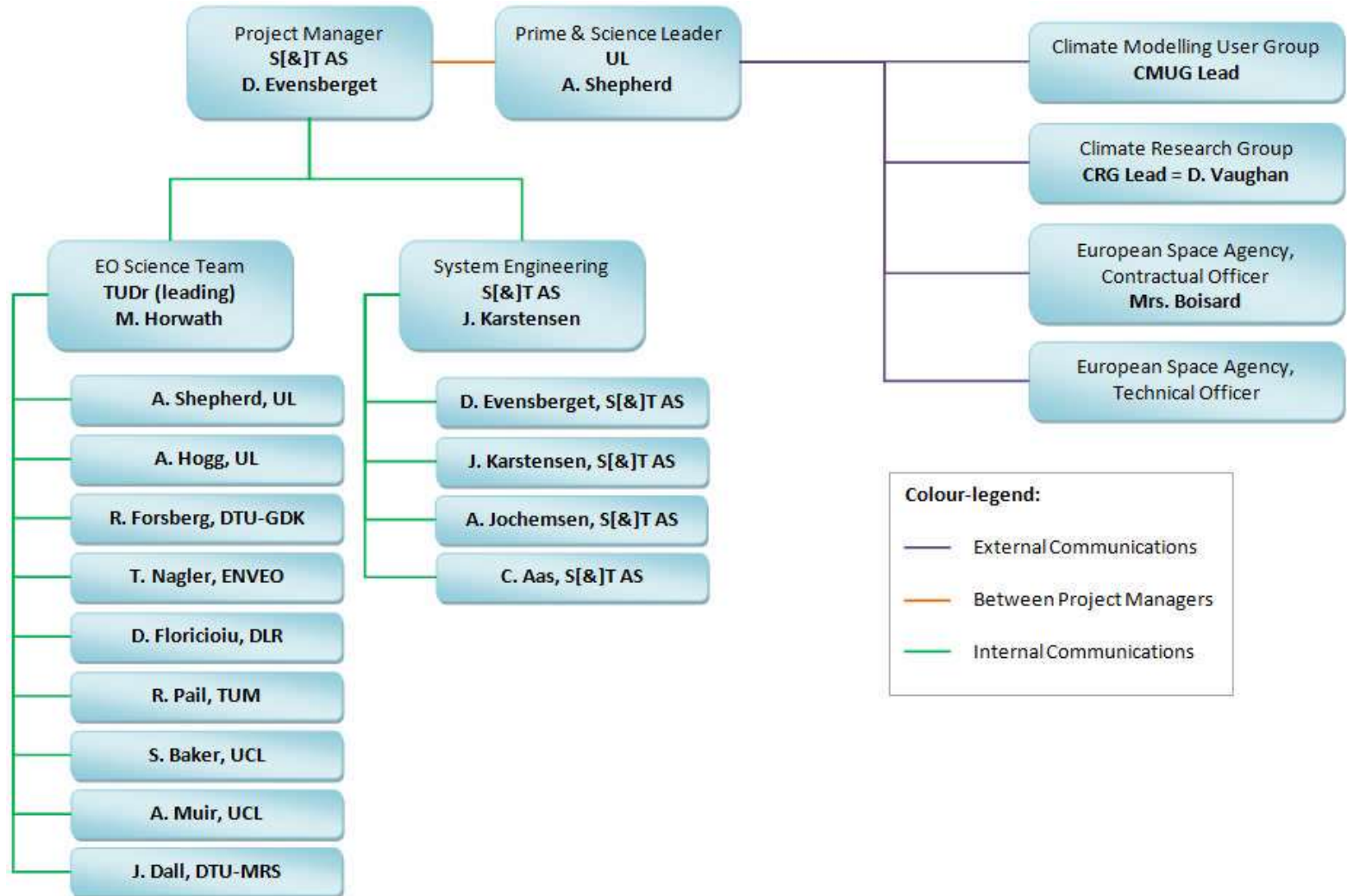
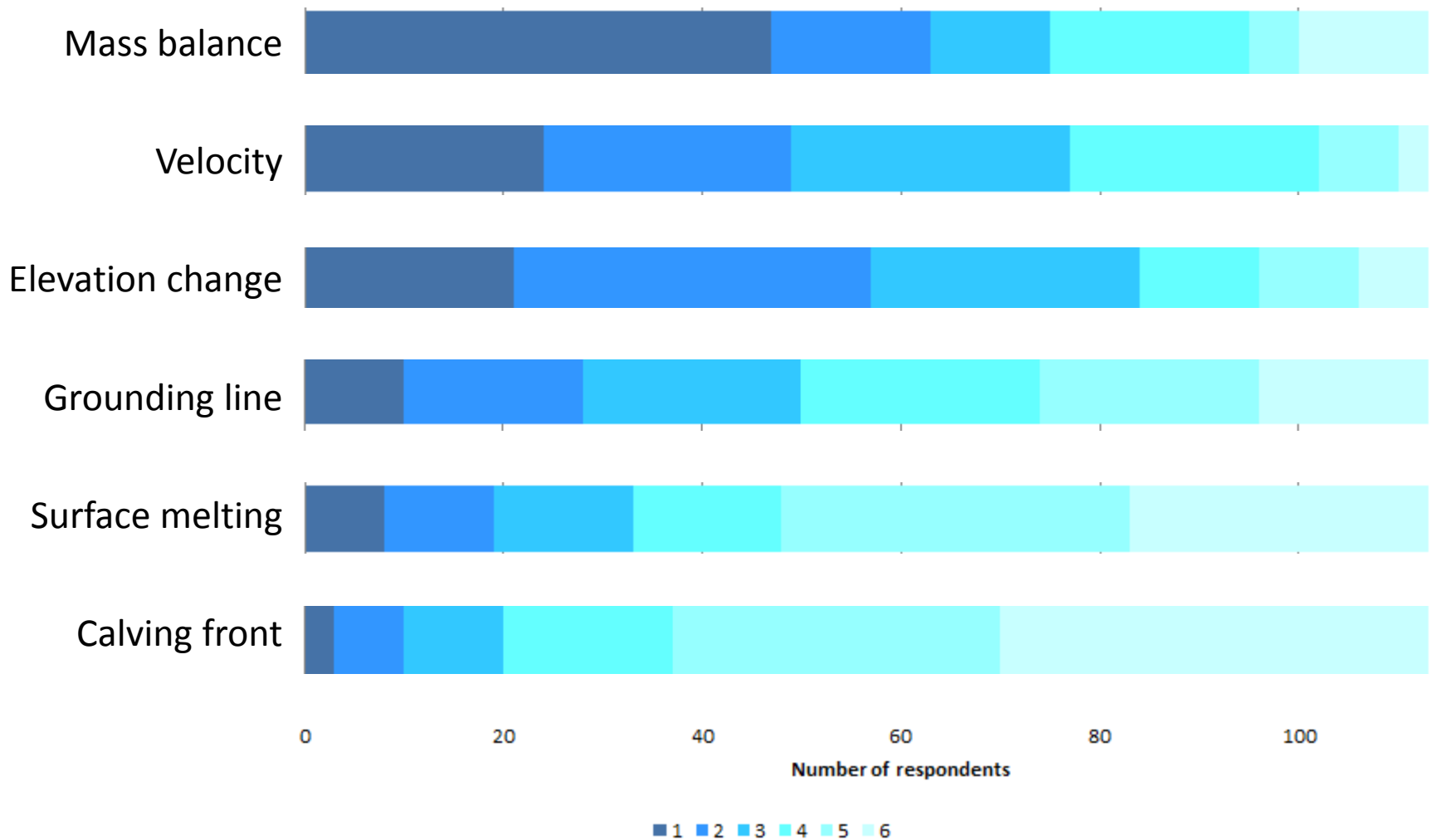


Team

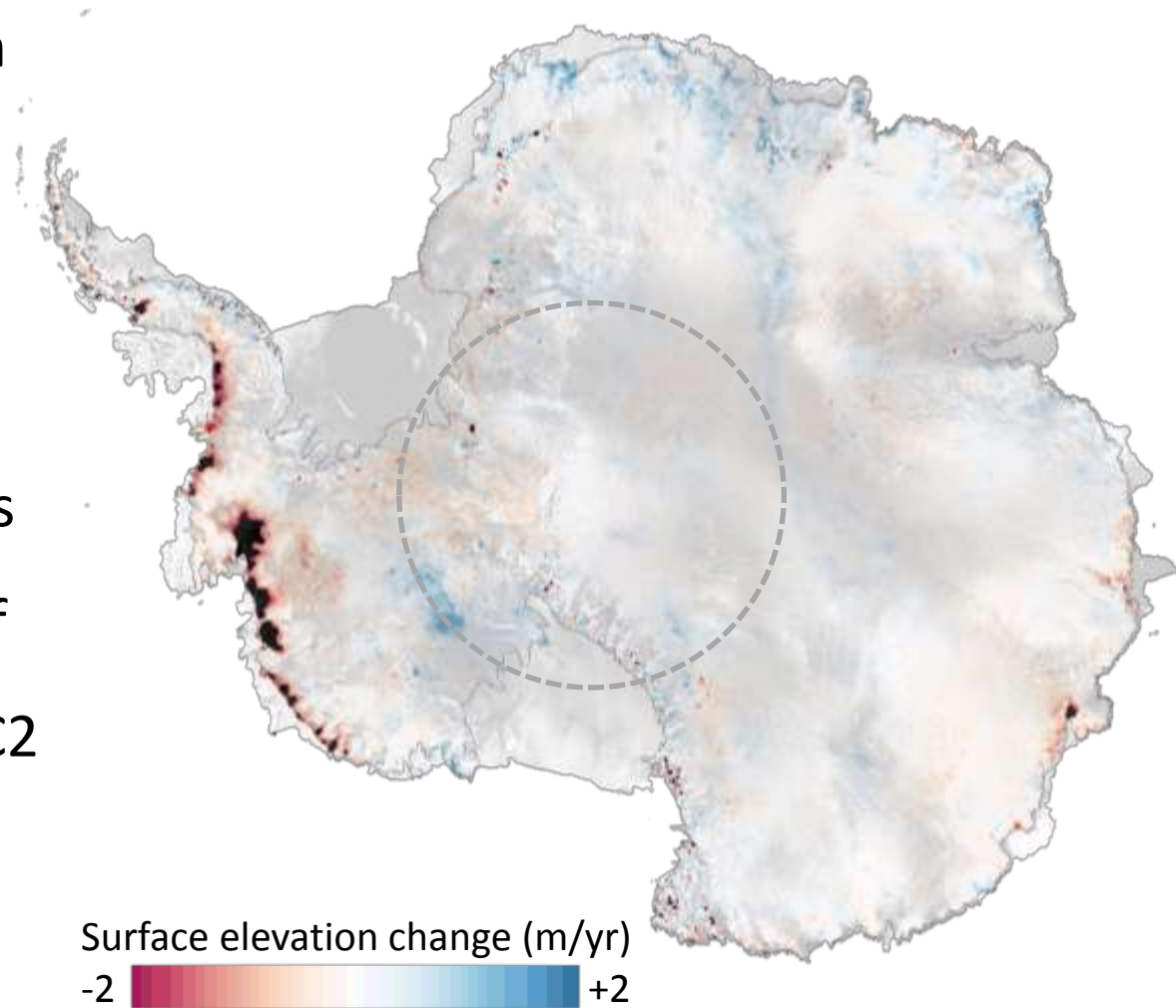


Products

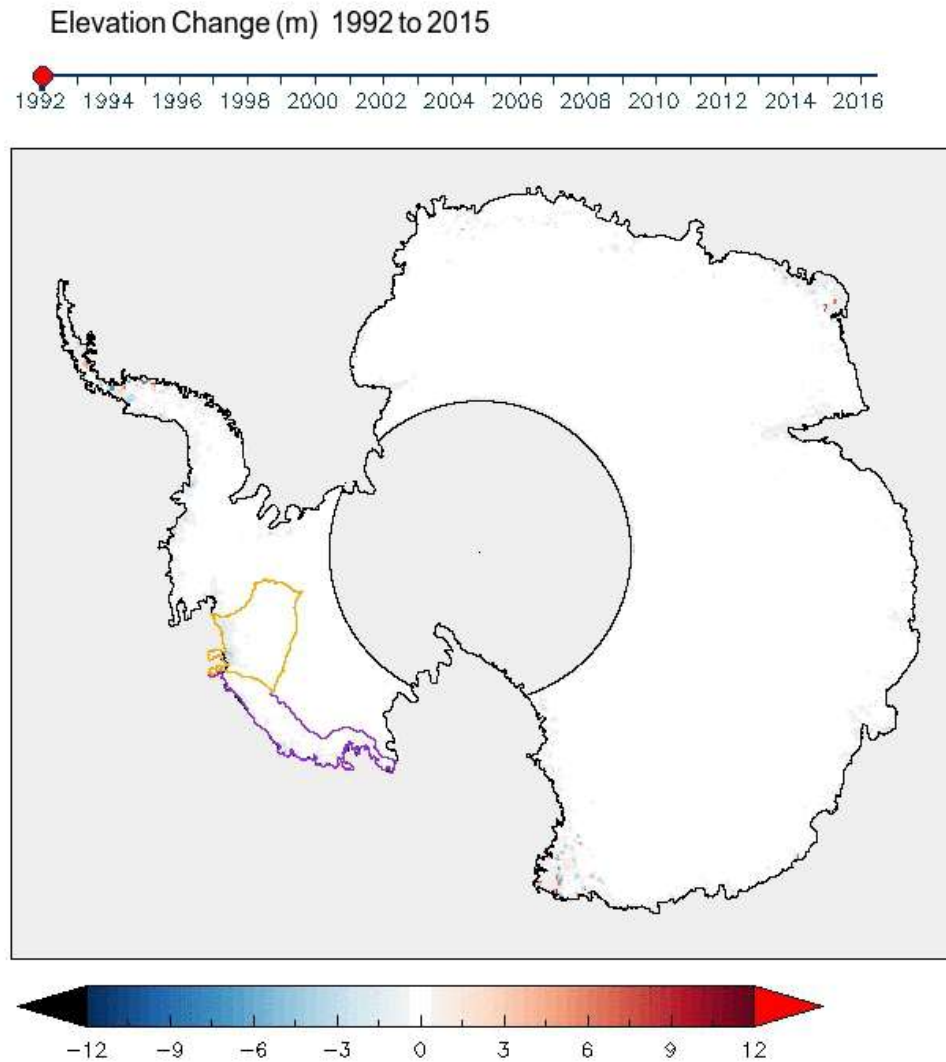


Surface elevation change

- SEC rapid round robin underway
- Initial products generated with alternative algorithms
- 24-year time series of SEC from E1, E2, EV, C2 archive



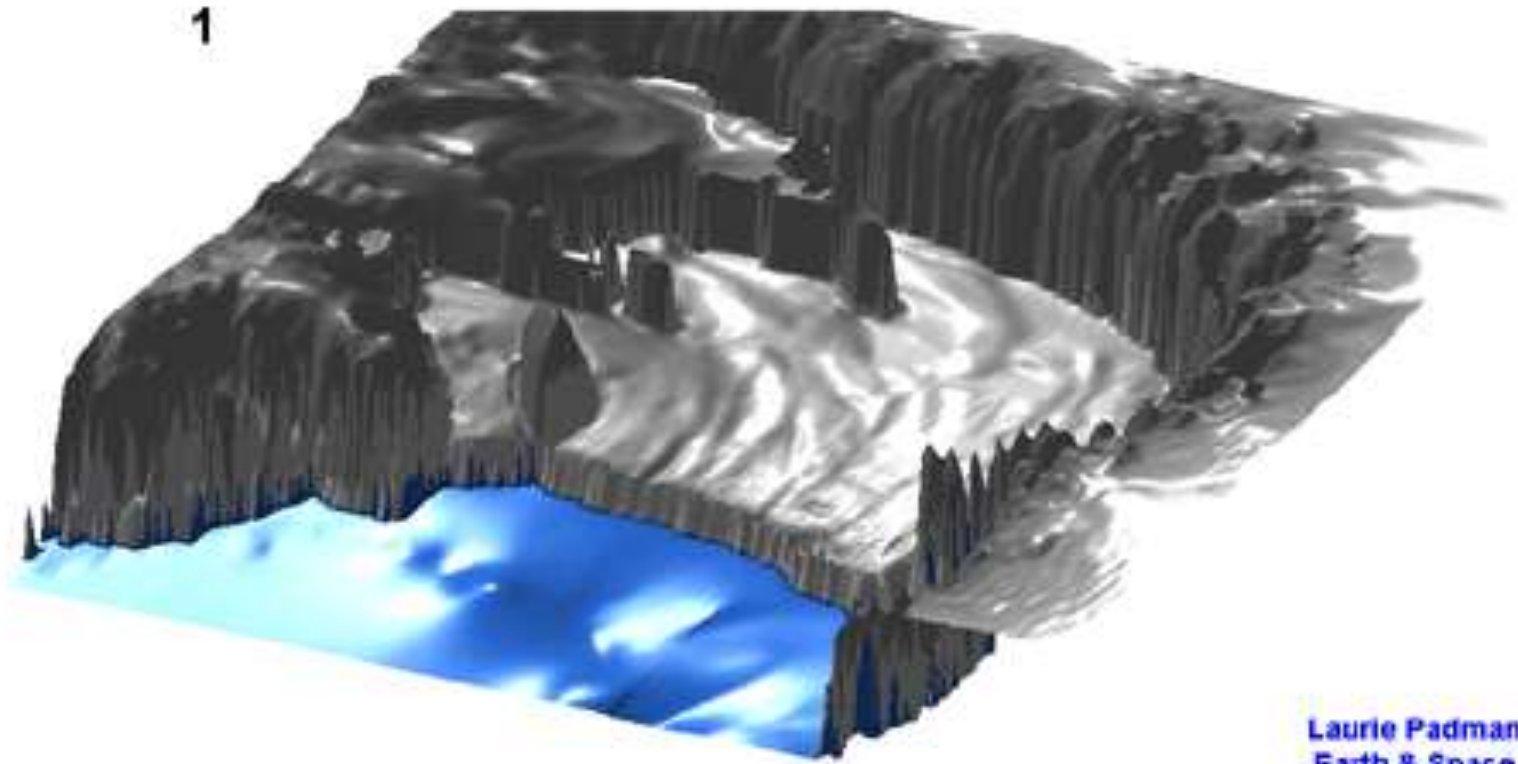
Surface elevation change



Ice velocity

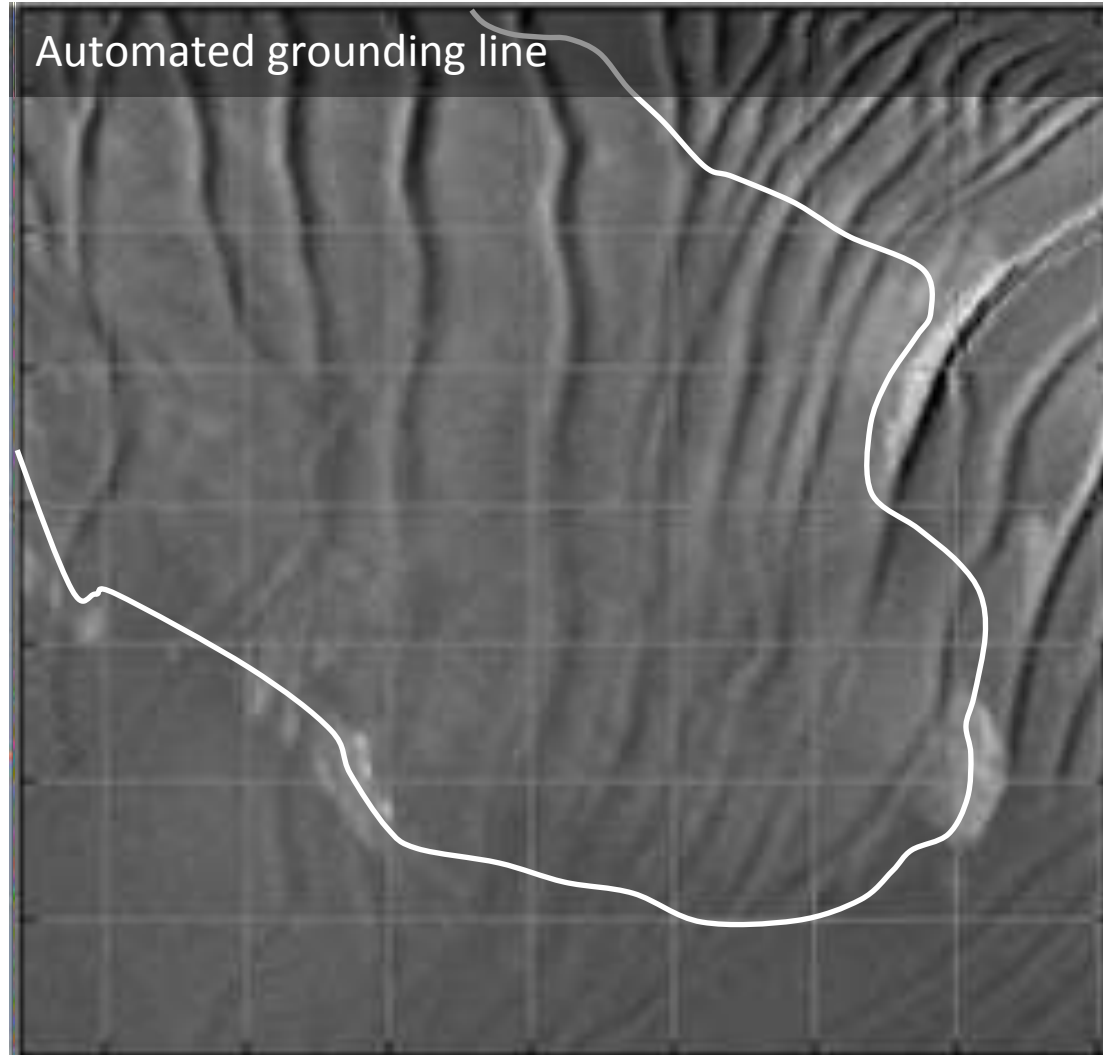
- First S1 campaign in Antarctica began May 2015
- >2400 slices acquired on 42 tracks
- Data acquisition ongoing
- Ice velocity mosaic being assembled
- One full year of ice velocity variations at highlight sites (e.g. Pine Island Glacier)
- ~30 IWS pairs

Grounding line

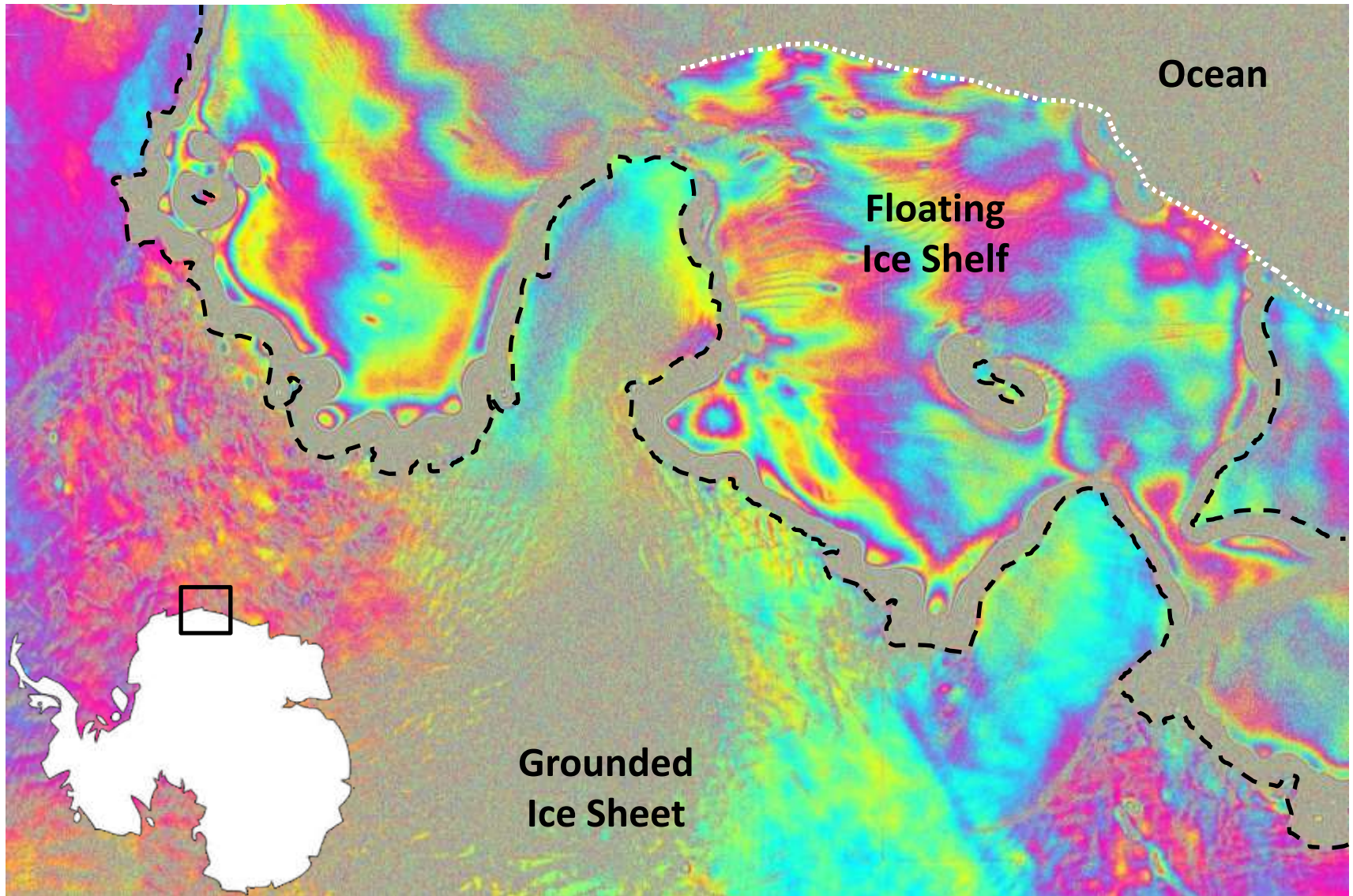


Laurie Padman
Earth & Space
Research

Grounding line

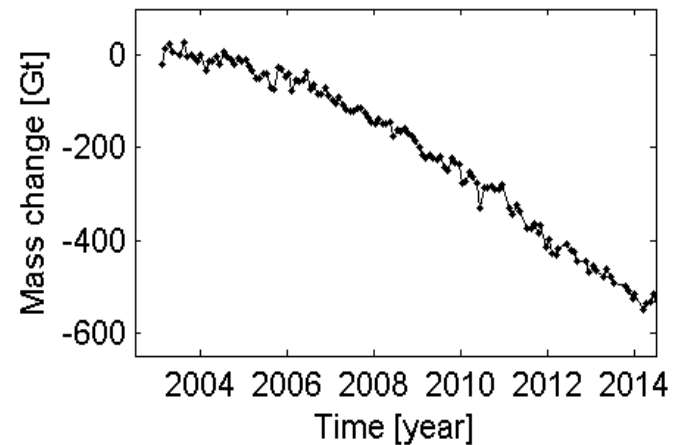
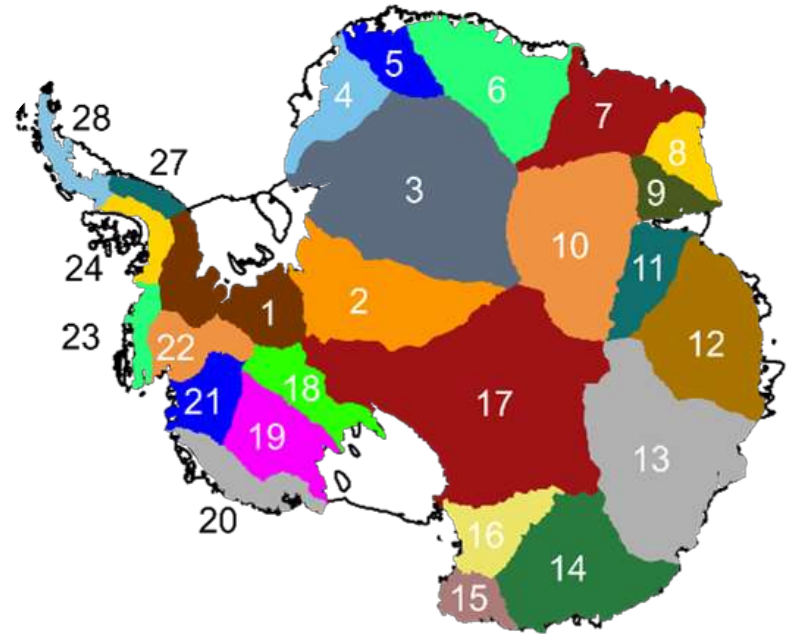


Grounding line



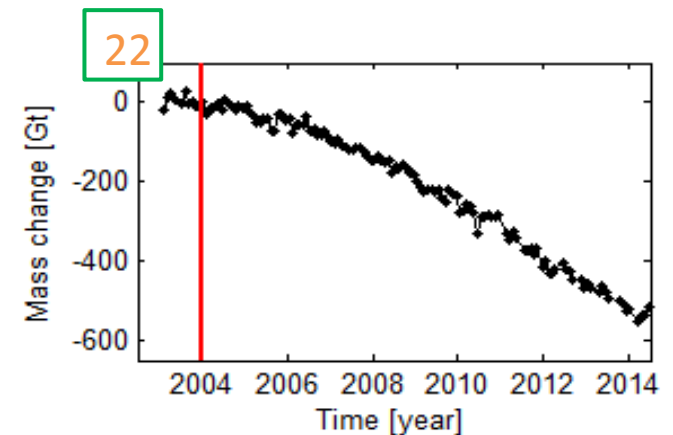
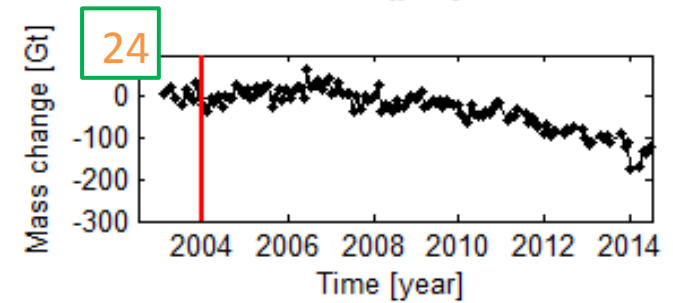
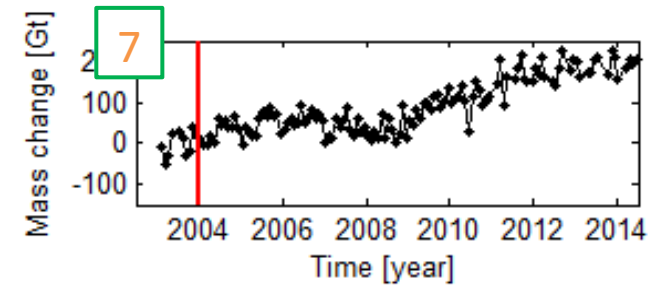
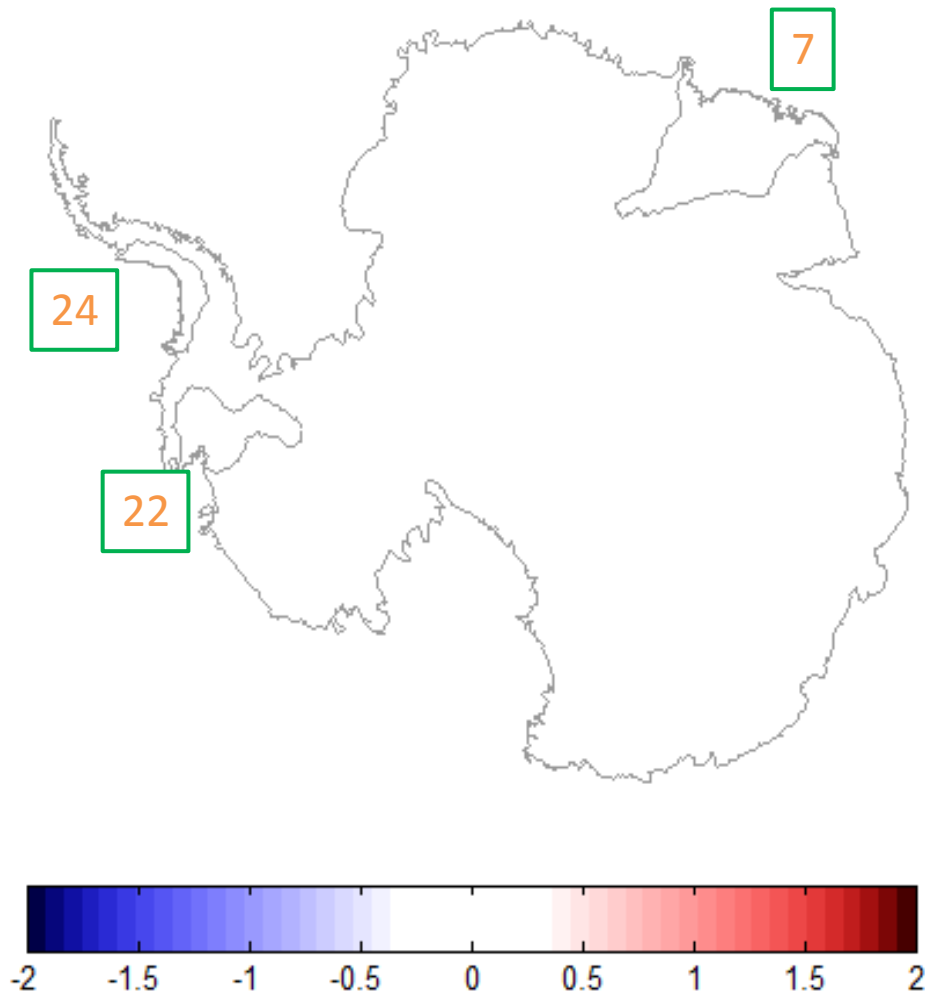
GRACE mass balance

- GRACE measures total mass change (snow + ice)
- Sensor resolution is (300-500 km) dictates optimal spatial resolution
- CCI product is time series of snow + ice mass change from large scale drainage basins
- GRACE follow-on due in 2017



GRACE mass balance

Mass change [m water equivalent] from 2003 to 2003



Summary

- URD, PSD, SRD completed during scoping study
- AIS CCI KO April 2015
- 4 products are
 - Surface elevation change
 - Ice velocity
 - Grounding line location
 - Grace mass balance
- Demonstration products complete
- Rapid Round Robin underway
- Systematic ECV production will commence thereafter